

Hindi Indic Input 2 - User Guide

Contents

WHAT IS HINDI INDIC INPUT 2?	3
SYSTEM REQUIREMENTS.....	3
TO INSTALL HINDI INDIC INPUT 2	3
TO USE HINDI INDIC INPUT 2.....	4
SUPPORTED KEYBOARDS	5
HINDI TRANSLITERATION	5
<i>Keyboard Rules</i>	5
HINDI INSCRIPT	7
HINDI TYPEWRITER	8
<i>Keyboard Rules</i>	8
HINDI TYPEWRITER (AKRUTI).....	9
<i>Keyboard Rules</i>	10
HINDI REMINGTON (PNB).....	11
<i>Keyboard Rules</i>	11
HINDI REMINGTON (GAIL)	13
<i>Keyboard Rules</i>	13
HINDI REMINGTON (CBI)	15
<i>Keyboard Rules</i>	15
HINDI WEBDUNIA KEYBOARD	17
<i>Keyboard Rules</i>	17
HINDI ANGLO-NAGARI.....	18
<i>Keyboard Rules</i>	18
TOOL SETTING OPTIONS	19
ON-THE-FLY HELP	19
SHOW KEYBOARD	20
SWITCH TO ENGLISH.....	20
HELP	20
TROUBLESHOOTING	21
TO UNINSTALL HINDI INDIC INPUT 2	22

What is Hindi Indic Input 2?

Hindi Indic Input 2 provides a very convenient way of entering text in Hindi Language using the English QWERTY keyboard in any editing application (Office Application/WordPad /Notepad) that supports Text Services. Hindi Indic Input 2 tool will be packaged as a setup and running the setup will invoke the services. The tool supports all popular keyboard layouts.

System Requirements

Windows Vista

Windows 7

*Tool is compatible with equivalent 64-bit Operating Systems mentioned above.

To Install Hindi Indic Input 2

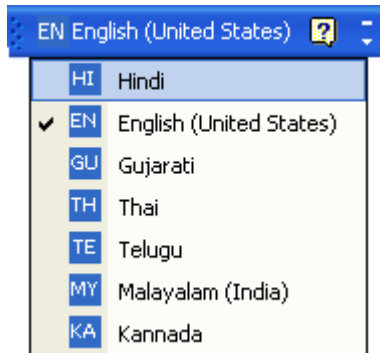
Installation of the Hindi Indic Input 2 is a very easy process that takes less than two minute to complete.

Run or double click **Hindi Indic Input 2 Setup**. The setup wizard will guide you through the installation process. Once the installation process is complete, **Hindi Indic Input 2 has been successfully installed** will be displayed.

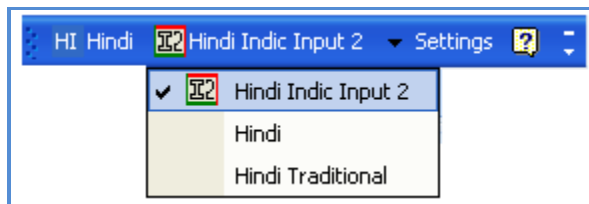
Note: On Windows Vista and Windows 7, if your user login does not have administrative privileges or is not included in the user group of administrators right click the "Setup.exe" icon and select "Run as Administrator".

To Use Hindi Indic Input 2

1. Start any Office application, including WordPad or Notepad.
2. Click the Language Indicator located in the System Tray on the right side of the Windows taskbar or on Language bar as shown below and select **HI-Hindi**.



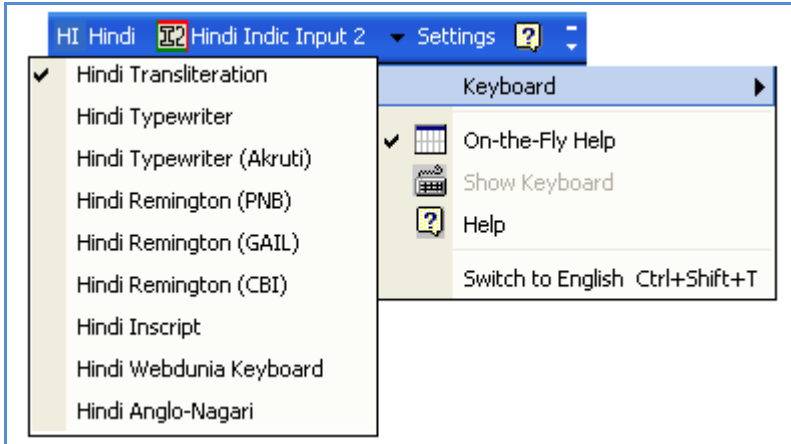
3. Select **Hindi Indic Input 2** from the shortcut menu that appears. The PC is now ready to start typing in Hindi.



Note: If you are unable to view Language bar on your PC [Click Here](#).

Supported Keyboards

Hindi Indic Input 2 supports various types of Keyboards. Click **Settings** Icon and select **Keyboard**. Choose keyboard layout of your choice form list of available keyboards.



Hindi Transliteration

User can type his message in Roman using the Standard English keyboard, which is transliterated on-the-fly to Hindi. It works on the logic of phonetics and is most effective when user write the word the way it is spoken.

Keyboard Rules

Vyanjan (Consonants)									
क	ka, ca	ख	kha	ग	ga	घ	gha	ङ	Nga
च	cha	छ	chha	ज	ja	झ	jha	ञ	Nja
ट	Ta	ठ	Tha	ड	Da	ढ	Dha	ण	Na
त	ta	थ	tha	द	da	ध	dha	न	na
प	pa	फ	pha,fa	ब	ba	भ	bha	म	ma
य	ya	र	ra	ल	la	व	va,wa	श	sha
ष	Sha	स	sa	ह	ha	क्ष	kSha,Xa	त्र	Tra
ज्ञ	Gya,jNja,dny								

Swar (Vowels)									
अ	a	आ	aa	इ	i	ई	ee,ii,l	उ	u
ऊ	oo,uu,U	ऋ	R	ए	e	ऌ	A	ऐ	ai,ei
ओ	o	ऌ	O	औ	au,ou	अं	a^	अः	aH

Examples	
Input	Output
itihass	इतिहास
imalee	इमली

Matras

ा	aa	ि	i	ी	ee,ii,l	ु	u	ू	oo,uu,O	ृ	R
े	e	ै	ai,ei	ो	o	ौ	au,ou	ँ	A	ॉ	O

Examples

Input	Output
aadamee	आदमी
kaun	कौन

Anuswara, Visarga and Chandrabindi

ं	^	ः	H	ँ	M
---	---	---	---	---	---

Examples

Input	Output
sa^yam	संयम
duHkh	दुःख
haMs	हँस

Conjuncts

क्र	kr	प्र	pr	क्त	qt	क्त	kt	न्म	nm
द्य	dya	द्ध	ddh	द्वा	dwa	क्स	ksa,x	र्ष	rpa

Examples

Input	Output
arpaN	अर्पण
kShamaa,Xamaa	क्षमा

Nukta Consonants

क	qa	ख	Kha	ग	Ga	ज़	za	ड़	D_a
फ़	Fa	ढ	Dh_a						

Example:	
Input	Output
waFaa	वफा
paDh_aaee	पढ़ाई

Explicit Halant Example:	
Input	Output
satyam_	सत्यम्
shreemad_	श्रीमद्

Explicit Half Consonants Example:	
Input	Output
muk~t	मुक्त
vish~v	विश्व

Hindi Inscript



Special Combinations

A consonant followed by halant and consonant, creates a conjunct.	क + ् + त = क्त
A consonant followed by halant and ZWJ and consonant, creates a half consonant combination.	क + ् + [Ctrl-Shift-1] + त = क्के
A consonant followed by halant and ZWNJ and consonant, joins them with an explicit halant.	क ् + [Ctrl-Shift-2] + त = क्त
To type Roman Numerals (Numbers), use the Numpad Keys of the Keyboard with Caps Lock Key ON	
To type Lingual Numerals (Numbers), use the Numpad Keys of the Keyboard with Caps Lock Key OFF	

Hindi Typewriter



Keyboard Rules

Escape + key Combinations		
Key	Output	Comment
3	-	Hyphen
4	ऋ	Ri Vowel
5	ॠ	Ri Matra
7	÷	Divide sign
8	×	Cross sign
½	-	Hyphen
»	--	Double Hyphen
I	फ़	f Nukta
P	ढ़	Dh_ Nukta
A	ख़	kha Nukta
X	ग़	ga Nukta
C	ज़	ja Nukta
V	!	Exclamation Mark
B	*	Asterisk
M	ड़	Da Nukta

Special Combinations	
'i' matra is typed ahead of consonant or conjunct.	ि + क = कि ि + म + क = म्कि ि + न + त्र = न्त्रि
'Reph' is typed after any consonant or conjunct.	क + reph = कॅ कि + reph = किं न्कि + reph = न्किं
Half consonant followed by 'aa' matra will create full consonant form.	म् + ा = म ि + म् + ा = मि ि + क्ष + म् + ा = क्षिम म् + ा + reph = मॅ
'i' vowel is followed by reph, creates 'ee' vowel.	इ + reph = ई
'a' vowel is followed by 'aa' matra creates 'aa' vowel.	अ + ा = आ
'aa' vowel is followed by 'A' matra creates 'O' vowel.	आ + ॅ = आँ
'aa' matra is followed by 'A' matra creates 'O' matra.	सा + ॅ = साँ
'e' vowel is followed by 'A' matra creates 'E' vowel.	ए + ॅ = ऐ
'e' vowel is followed by 'ei' matra creates 'ei' vowel.	ए + े = ऐ
'aa' vowel is followed by 'e' matra creates 'o' vowel.	आ + े = ओ
'aa' vowel is followed by 'ei' matra creates 'au' vowel.	आ + ै = औ
'aa' matra is followed by 'e' matra creates 'o' matra.	सा + े = सो
'aa' matra is followed by 'ei' matra creates 'au' matra.	सा + ै = सौ
To type Roman Numerals (Numbers), use the Numpad Keys of the Keyboard with Caps Lock Key ON	
To type Lingual Numerals (Numbers), use the Numpad Keys of the Keyboard with Caps Lock Key OFF	

Hindi Typewriter (Akruti)



Keyboard Rules

Escape + key Combinations		
Key	Output	Comment
3	-	-
4	ऋ	Ra
5	ॠ	Ra
7	÷	Divide sign
8	×	Cross sign
½	-	Hyphen
»	--	Double Hyphen
l	फ़	f dot
p	ढ	Dh_
A	ख़	kha dot
X	ग़	ga dot
C	ज़	ja dot
V	!	Exclamation Mark
B	*	Asterisk
M	ड़	D_

Special Combinations	
'u' vowel (m) followed by poonchh (Q) creates 'oo' vowel.	उ (m) + Q = ऊ
'pa' consonant followed by poonchh (Q) creates 'fa'.	प (i) + Q = फ
'ra' consonant followed by poonchh forms 'ru'.	र (j) + Q = रु
'i' matra is typed ahead of consonant or conjunct.	ि + क = कि ि + म + क = म्कि ि + न + त्र = न्त्रि
'Reph' is typed after any consonant or conjunct.	क + reph = कॅ कि + reph = किँ न्कि + reph = न्किँ
Half consonant followed by 'aa' matra will create full consonant form.	म् + ा = म ि + म + ा = मि ि + क्ष + म + ा = क्षिम म् + ा + reph = मॅ क्ष + म + ा + reph = क्षमॅ

'i' vowel is followed by reph, creates 'ee' vowel.	इ + reph = ई
'a' vowel is followed by 'aa' matra creates 'aa' vowel.	अ + ा = आ
'aa' vowel is followed by 'A' matra creates 'O' vowel.	आ + ॉ = औ
'aa' matra is followed by 'A' matra creates 'O' matra.	सा + ॉ = साँ
'e' vowel is followed by 'A' matra creates 'E' vowel.	ए + ै = ऐ
'e' vowel is followed by 'ei' matra creates 'ei' vowel.	ए + े = ऐ
'aa' vowel is followed by 'e' matra creates 'o' vowel.	आ + े = ओ
'aa' vowel is followed by 'ei' matra creates 'au' vowel.	आ + ै = औ
'aa' matra is followed by 'e' matra creates 'o' matra.	सा + े = सो
'aa' matra is followed by 'ei' matra creates 'au' matra.	सा + ै = साँ
To type Roman Numerals (Numbers), use the Numpad Keys of the Keyboard with Caps Lock Key ON	
To type Lingual Numerals (Numbers), use the Numpad Keys of the Keyboard with Caps Lock Key OFF	

Hindi Remington (PNB)



Keyboard Rules

Key Mapping with Escape	
Key	Output
g	ee matra with reph
G	ee matra with reph
h	ee matra with reph
z	e matra with reph
Z	ei matra with reph
`	Nukta

Special Combinations

'a' vowel followed by 'aa' matra creates 'aa' vowel.	अ + ा = आ
1)'aa' vowel followed by 'e' matra, creates 'o' vowel. 2)'aa' vowel followed by 'ei' matra, creates 'au' vowel. 3)'aa' vowel followed by 'A' matra, creates 'O' vowel.	आ + े = ओ आ + ै = औ आ + ँ = औँ
1)'aa' matra followed by 'e' matra, creates 'o' matra. 2)'aa' matra followed by 'ei' matra, creates 'au' matra. 3)'aa' matra followed by 'A' matra, creates 'O' matra.	सा + े = सो सा + ै = सौ सा + ँ = साँ
1)'e' vowel followed by 'A' matra, creates 'E' vowel. 2)'e' vowel followed by 'e' matra, creates 'ei' vowel.	ए + W = ऐ ए + s = ऐे
'A' matra followed by anuswar, forms chandrabindi.	कँ + ं = कँँ
'u' vowel followed by poonch (Q) creates 'oo' vowel.	उ + Q = ऊ
'pa' consonat followed by poonch (Q) creates 'pha' consonant.	प + Q = फ
'ra' consonat followed by poonch (Q) creates 'roo'.	र + Q = रू
'rakar' is typed after a consonant/conjunct.	कि + rakar = क्रि क्र + rakar = क्रि
'Reph' is typed after any consonant or conjunct.	क + reph = कर्क कि + reph = किर्कि न्कि + reph = न्किर्कि
'i' matra is typed ahead of consonant or conjunct.	ि + क = कि ि + म् + क = म्कि ि + न् + त्र = न्त्रि
To type Roman Numerals (Numbers), use the Numpad Keys of the Keyboard with Caps Lock Key ON	
To type Lingual Numerals (Numbers), use the Numpad Keys of the Keyboard with Caps Lock Key OFF	

Hindi Remington (GAIL)



Keyboard Rules

Key Mapping with Escape key		
Key	Output	Comment
3	-	-
4	ऋ	Ra
5	ॠ	Ra
7	÷	Divide sign
8	×	Cross sign
½	-	Hyphen
»	--	Double Hyphen
l	फ़	f dot
p	ढ	Dh_
A	ख़	kha dot
X	ग़	ga dot
C	ज़	ja dot
V	!	Exclamation Mark
B	*	Asterisk
M	ड़	D_

Special Combinations	
'a' vowel followed by 'aa' matra creates 'aa' vowel.	अ + ा = आ
1)'aa' vowel followed by 'e' matra, creates 'o' vowel. 2)'aa' vowel followed by 'ei' matra, creates 'au' vowel. 3)'aa' vowel followed by 'A' matra, creates 'O' vowel.	आ + े = ओ आ + ै = औ आ + ँ = औँ
1)'aa' matra followed by 'e' matra, creates 'o' matra. 2)'aa' matra followed by 'ei' matra, creates 'au' matra. 3)'aa' matra followed by 'A' matra, creates 'O' matra.	सा + े = सो सा + ै = सौ सा + ँ = साँ
1)'e' vowel followed by 'A' matra, creates 'E' vowel. 2)'e' vowel followed by 'e' matra, creates 'ei' vowel.	ए + W = ऐ ए + s = ऐे
'A' matra followed by anuswar, forms chandrabindi.	कँ + ं = कँँ
'u' vowel followed by poonch (Q) creates 'oo' vowel.	उ + Q = ऊ
'pa' consonat followed by poonch (Q) creates 'pha' consonant.	प + Q = फ
'ra' consonat followed by poonch (Q) creates 'roo'.	र + Q = रू
'rakar' is typed after a consonant/conjunct.	कि + rakar = क्रि क्र + rakar = क्रि
'Reph' is typed after any consonant or conjunct.	क + reph = कर्क कि + reph = कर्कि न्कि + reph = न्कि
'i' matra is typed ahead of consonant or conjunct.	ि + क = कि ि + ऋ + क = म्कि ि + ञ + व = न्नि
To type Roman Numerals (Numbers), use the Numpad Keys of the Keyboard with Caps Lock Key ON	
To type Lingual Numerals (Numbers), use the Numpad Keys of the Keyboard with Caps Lock Key OFF	

Hindi Remington (CBI)



Keyboard Rules

Key Mapping with Escape key		
Key	Output	Comment
3	-	-
4	ऋ	Ra
5	ॠ	Ra
7	÷	Divide sign
8	×	Cross sign
½	-	Hyphen
»	--	Double Hyphen
I	फ़	f dot
P	ढ़	Dh_
A	ख़	kha dot
X	ग़	ga dot
C	ज़	ja dot
V	!	Exclamation Mark
B	*	Asterisk
M	ड़	D_

Special Combinations

'a' vowel followed by 'aa' matra creates 'aa' vowel.	अ + ा = आ
1)'aa' vowel followed by 'e' matra, creates 'o' vowel. 2)'aa' vowel followed by 'ei' matra, creates 'au' vowel. 3)'aa' vowel followed by 'A' matra, creates 'O' vowel.	आ + े = ओ आ + ै = औ आ + ँ = औँ
1)'aa' matra followed by 'e' matra, creates 'o' matra. 2)'aa' matra followed by 'ei' matra, creates 'au' matra. 3)'aa' matra followed by 'A' matra, creates 'O' matra.	सा + े = सो सा + ै = सौ सा + ँ = साँ
1)'e' vowel followed by 'A' matra, creates 'E' vowel. 2)'e' vowel followed by 'e' matra, creates 'ei' vowel.	ए + W = ऐ ए + s = ऐ
'A' matra followed by anuswar, forms chandrabindi.	कँ + ं = कँ
'u' vowel followed by poonch (Q) creates 'oo' vowel.	उ + Q = ऊ
'pa' consonat followed by poonch (Q) creates 'pha' consonant.	प + Q = फ
'ra' consonat followed by poonch (Q) creates 'roo'.	र + Q = रू
'rakar' is typed after a consonant/conjunct.	कि + rakar = क्रि क्र + rakar = क्रि
'Reph' is typed after any consonant or conjunct.	क + reph = कर्क कि + reph = कर्कि न्कि + reph = न्किर्क
'i' matra is typed AFTER of consonant or conjunct.	क + ि = कि म् + क + ि = म्कि न् + त्र + ि = न्त्रि
To type Roman Numerals (Numbers), use the Numpad Keys of the Keyboard with Caps Lock Key ON	
To type Lingual Numerals (Numbers), use the Numpad Keys of the Keyboard with Caps Lock Key OFF	

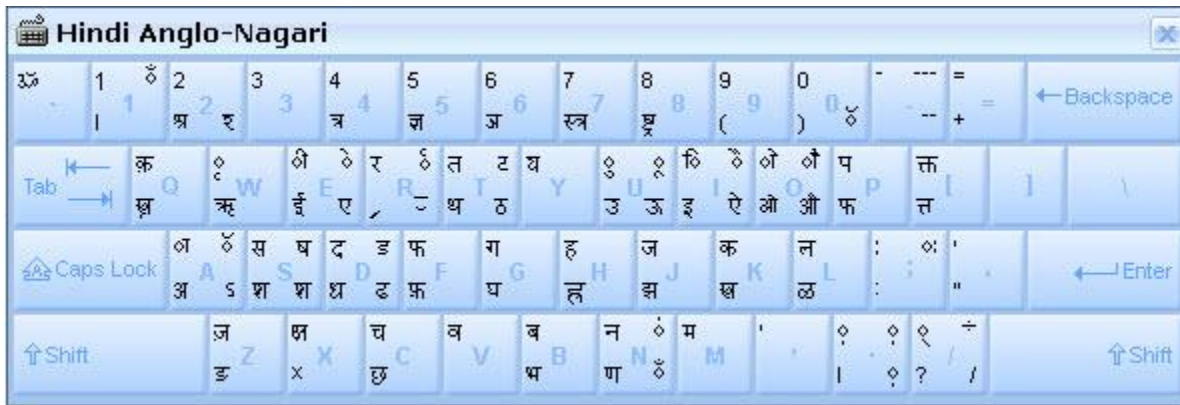
Hindi Webdunia Keyboard



Keyboard Rules

Special Combinations	
'Reph' is typed after any consonant or conjunct.	क + reph = कॅ कि + reph = किं न्कि + reph = न्किं
'i' vowel followed by reph, creates 'ee' vowel.	इ + reph = ई
'a' vowel followed by 'aa' matra creates 'aa' vowel.	अ + ा = आ
'aa' vowel followed by 'ei' matra, creates 'au' vowel.	आ + ै = औ
'a' vowel followed by 'O' matra, creates 'O' vowel.	आ + ॅ = आँ
'i' matra is typed ahead of consonant or conjunct.	ि + क = कि ि + ऋ + क = म्कि ि + न् + त्र = न्त्रि
To type Roman Numerals (Numbers), use the Numpad Keys of the Keyboard with Caps Lock Key ON	
To type Lingual Numerals (Numbers), use the Numpad Keys of the Keyboard with Caps Lock Key OFF	

Hindi Anglo-Nagari



Keyboard Rules

If Caps Lock is ON (without Shift)		
Key	Output	Comment
2	श्	Half sha
0	ँ	Chandra
-	--	Double Hyphen
E	े	Matra
R	reph	Reph
T	ट	Ta
U	ू	oo matra
I	ै	ei matra
O	ौ	ou matra
A	ँ	A matra
S	ष	Sha
D	ड	Da
N	ं	Anuswar
/	/	Forward slash
.	◌	Nukta
!	◌	Chandrabindi
_	---	---

If Caps Lock is ON (with Shift)		
Key	Output	Comment
e	ए	e Vowel
r	एलश RA	Eyesh RA
t	ठ	Tha
u	ऊ	uu Vowel
i	ऐ	ai vowel
o	औ	au vowel
a	स	Avgraha
s	श	sha consonant
d	ढ	Dha consonant
:	ः	Visarg
n	ँ	Chandra Bindi
?	÷	Divide Sign
>	◌	Nukta

Special Combinations	
Esc + any key is equivalent to Shift key +same key with Caps Lock ON	
'i' matra is typed ahead of consonant or conjunct.	ि + क = कि
Vowel अ followed by 'a', creates vowel आ.	अ + a = आ
Any consonant followed by 'R' creates rakar form of the consonant.	क + R = क्र
Any consonant followed by 'R' (Caps ON) creates reph form of the consonant.	क + R (CAPS ON) = कै
Vowel आ followed by 'A' (Caps ON), creates vowel आँ.	आ + A = आँ
If any consonant + aa matra is followed by 'A' (Caps ON), 'O' matra is formed.	का + A = काँ
Vowel अ followed by 'A' (Caps ON), created vowel अँ	अ + A = अँ
If any consonant is followed by 'A' (Caps ON), A matra is formed.	क + A = कै
क,ख,ज,ग,ड,ढ,फ followed by fullstop (Caps ON), create equivalent Nukta forms - क्,ख्,ज्,ग्,ड्,ढ्,फ् .	क + . (CAPS ON)= क्
To type Roman Numerals (Numbers), use the Numpad Keys of the Keyboard with Caps Lock Key ON	
To type Lingual Numerals (Numbers), use the Numpad Keys of the Keyboard with Caps Lock Key OFF	

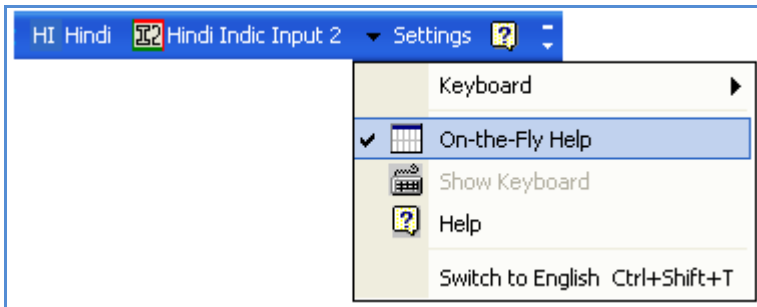
Tool Setting Options

On-the-fly Help

Tool provides the simplest way to type text by using on-the-fly Help. As the user starts typing using transliteration keyboard, he can see the respective letters in selected Indian Language with various matra combinations.

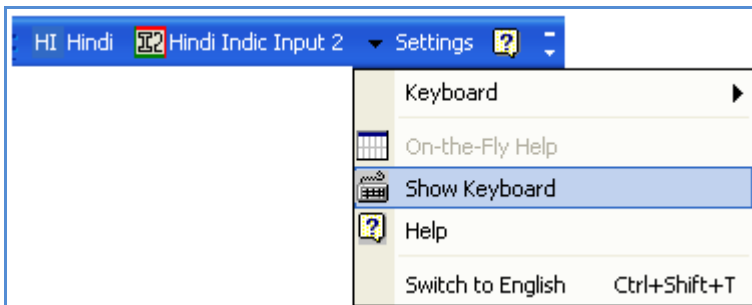
To activate this feature select **On-the-Fly Help** from **Settings** Menu.

k: क kh: ख K: क Kh: ख kSh: क्ष																	
k	ka	kaa	ki	kee	ku	koo	ke	kai	ko	kau	k^	kH	kM	kO	kA	kR	kra
क्	क	का	कि	की	कु	कू	के	कै	को	कौ	कं	कः	कँ	कों	कैं	कृ	क्र



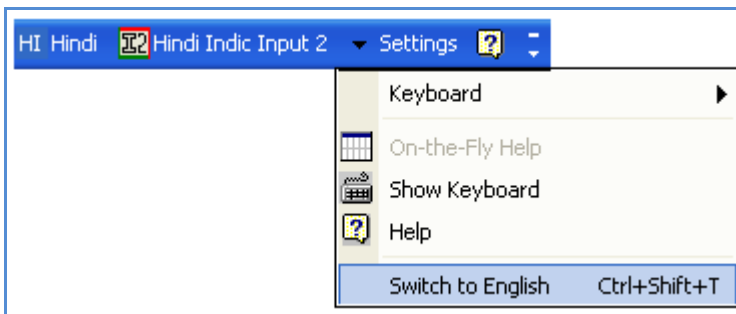
Show Keyboard

To view any keyboard (except Phonetic) select **Show Keyboard** option from **Settings** Menu.



Switch to English

To switch to English Language, select **Switch to English** option from **Settings** Menu or use shortcut key Ctrl+Shift+T.



Help

To view help on Hindi Indic Input 2 tool, select **Help** from **Settings** Menu.



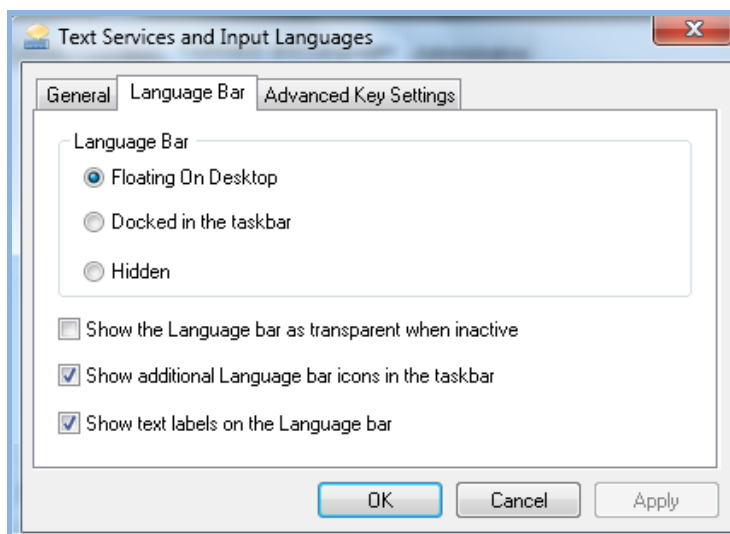
Troubleshooting

1. How can I make Language bar visible on my PC?

Right-click your Desktop taskbar, and point to **Toolbars**. See is **Language bar** selected, if not click on it to select. If Language bar is no longer listed in the toolbar menu try below steps:

VISTA/WINDOWS 7

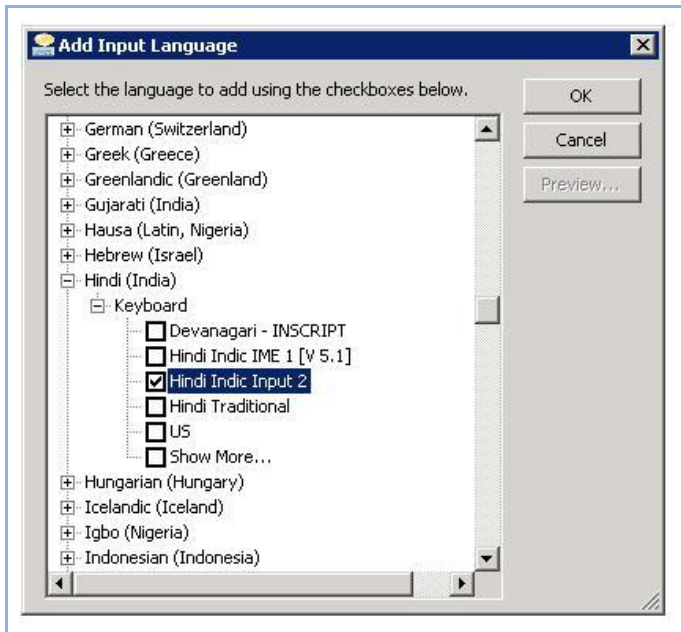
- Go to **Control Panel > Regional and Language Options > Keyboards and Languages (tab) > Change Keyboards > Language Bar**
- Select radio button **Floating on Desktop** or **Docked in the taskbar**.
- Click **OK**.



2. How can I add Hindi Indic Input 2 on my Language bar?

VISTA/WINDOWS 7

- Go to **Control Panel > Regional and Language Options > Keyboards and Languages (tab) > Change Keyboards > General**.
- Click **Add** button, Select the Language (Hindi) and under Keyboard section check the box titled **Hindi Indic Input 2**.
- Click **OK**.



3. I do not want Hindi Indic Input 2 as the default input method for my PC. What can be done?

VISTA/WINDOWS 7

- Go to **Control Panel > Regional and Language Options > Keyboards and Languages (tab) > Change Keyboards > General**

Check both:

- ✓ You have not selected Hindi as your **Default Input Language**.
- ✓ You have not selected Hindi Indic Input 2 as an input method in Language bar.

To Uninstall Hindi Indic Input 2

Follow the steps below to uninstall the tool.

1. Open Windows **Control Panel**->>**Add/Remove Programs** to remove the program(s).
2. Select **Hindi Indic Input 2** and click **Remove** button.
3. You will be prompted by a confirmatory message. Select **Yes** to remove the tool completely.

Note: It is recommended to close all running applications before uninstalling the Hindi Indic Input 2 Tool.